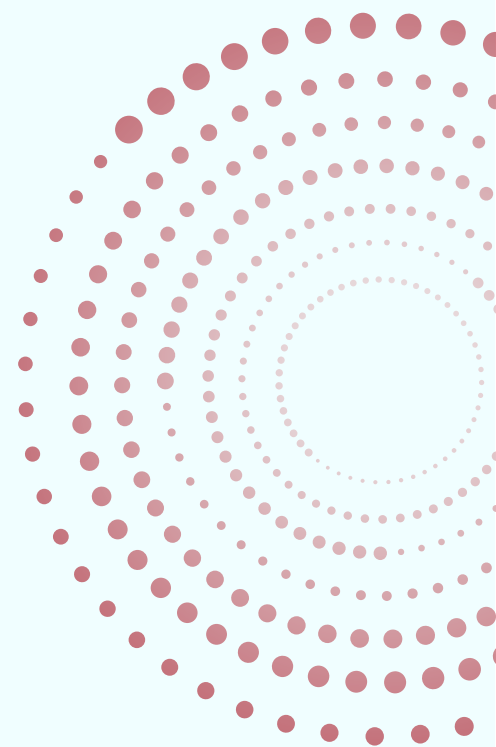




**EAST BRIDGE  
UNIVERSITY**  
PARIS, FRANCE



# **DIPLOMA IN COUNSELLING PSYCHOLOGY**

*Practical, Industry-Oriented, Transforming*



[www.ebu.ac](http://www.ebu.ac)

## **Step into a career that enables you to transform lives through fostering emotional well-being in multicultural settings!**

The Diploma in Counselling Psychology offers a strong foundation in key psychological principles and practical counselling applications in educational and community environments. It introduces major theoretical perspectives, such as Behaviourism, Cognitive Psychology, and Personality Psychology, helping you understand human behaviour from different viewpoints.

A primary focus is on the importance of cultural awareness and sensitivity, which are vital for effective and ethical counselling practice. The course provides insight into strategies for encouraging positive student behaviour, managing behavioural issues constructively, and supporting emotional well-being. It emphasises developing effective communication and problem-solving skills to navigate personal and interpersonal conflicts, fostering meaningful behavioural change.

The Diploma in Counselling Psychology prepares students to support individuals' academic, social, and emotional needs while promoting strong collaborations among schools, families, and community agencies to ensure holistic development.

### **Why Counselling Psychology?**

- ☒ Gain foundational knowledge of psychological theories and their relevance in counselling.
- ☒ Develop an understanding of human behaviour across various life stages with a focus on educational and community settings.
- ☒ Equip learners with practical counselling skills for addressing academic, emotional, and behavioural issues.
- ☒ Foster cultural competence and ethical sensitivity in diverse counselling environments.
- ☒ Prepare learners to work collaboratively with families, schools, and community agencies to promote overall well-being.

## Learning Outcomes

**Upon successful completion of the program, the student will be able to:**

- ✓ Demonstrate a clear understanding of key psychological theories, including Behaviourism, Cognitive Psychology, and Personality Psychology.
- ✓ Apply counselling techniques to support the emotional, academic, and social development of individuals.
- ✓ Analyse and address behavioural issues using constructive and culturally sensitive strategies.
- ✓ Use effective communication and problem-solving approaches to mediate conflicts and encourage positive behavioural change.
- ✓ Collaborate with educational institutions, families, and communities to design and implement student-centred support plans.



## Benefits of Pursuing a Diploma in Counselling Psychology?

East Bridge University's online Diploma in Counselling Psychology is designed to enhance the skills of educators, school counsellors, administrators, principals, and HODs in counselling psychology and student support. The program provides foundational knowledge in student counselling, emotional development, and psychological aspects, making it valuable for educators aiming to take on administrative roles while supporting students' psychological and emotional needs.

The flexible online format allows students to study from any location, making it ideal for working professionals or those with other commitments. Graduates can explore diverse roles such as school counsellor, teacher counsellor, career and guidance counsellor, or educational administrator with additional counselling responsibilities.

## Program Structure:

### Section 1

- ☒ Schools of Psychology
- ☒ Multicultural Counselling Approaches
- ☒ Classroom Behavioural Psychology
- ☒ Goals of Counselling

### Section 2

- ☒ Counselling in Schools and Communities

## About East Bridge University (EBU)

East Bridge University is a **global higher education institution** that offers online and affordable degree programs, diplomas, and certified courses to all. Tailored to meet the evolving needs of the 21st century, our programs offer a unique blend of robust theoretical knowledge and practical, real-world exposure. We aim to **empower adult learners and professionals with the best industry-specific courses** that enable them to navigate the dynamic and ever-evolving professional landscape seamlessly. At East Bridge University, we greatly foster critical thinking, analytical skills, and leadership qualities among our students.

East Bridge University is **legally incorporated in Paris** and has received authorisation from the Rector Office of the Paris Academy, which is under the jurisdiction of **the Ministry of National Education**. This prestigious recognition positions EBU as a legitimate, respected, and independent distance learning institution.

## What Makes Our Programs Unique?

- |                                                                                                                                                                                     |                                                                                                                                                            |                                                                                                                                                                            |
|-------------------------------------------------------------------------------------------------------------------------------------------------------------------------------------|------------------------------------------------------------------------------------------------------------------------------------------------------------|----------------------------------------------------------------------------------------------------------------------------------------------------------------------------|
|  <p>Find work-life balance with our online, flexible program.</p>                                 |  <p>The course is endorsed by global partners and education bodies.</p> |  <p>Gain a deeper understanding of the functional disciplines of your profession.</p> |
|  <p>Get the opportunity to conduct action-based research work, solving real-world challenges.</p> |  <p>Enhance your career prospects by earning academic credentials.</p>  |  <p>Be able to promote positive change and growth in your industry.</p>               |
|  <p>Become an industry expert and thought leader in your field.</p>                               |  <p>Open your doors towards doctorate-level academic pursuits.</p>      |  <p>Address real-world problems with a strong academic understanding.</p>             |

## East Bridge University's Memberships:



Association to Advance  
Collegiate Schools of  
Business (AACSB)



Continuing Professional  
Development (CPD)



British Quality Foundation  
(BQF)



European Association for  
International Education (EAIE)



European Council of Leading  
Business Schools (ECLBS)



E Learning Quality Network  
(ELQN)



Association for Teacher  
Education in Europe (ATEE)



European Society for  
Research on the Education of  
Adults (ESREA)



Accreditation Council for  
Business Schools and  
Programs (ACBSP)

## East Bridge University's Accreditations:



European Agency for Higher  
Education Advancement  
(EAHEA)



Education Quality  
Accreditation Commission  
(EQAC)



EDU.INT - INTER-  
GOVERNMENTAL  
ORGANIZATION



International Association for  
Quality Assurance in Pre-Tertiary  
& Higher Education (QAHE)



International Education  
Accreditation Council (IEAC)



OTHM Qualifications



Mercosul Accreditation  
Agency (MACCA)



## Eligibility Criteria:

**To be eligible to pursue a Diploma in Counselling Psychology from East Bridge University, an applicant must meet the following criteria:**

- ✓ High school diploma or equivalent
- ✓ A basic English proficiency level
- ✓ Knowledge of internet browsing
- ✓ Proficiency in MS Word is desired

## Certification

After successful program completion, East Bridge University (EBU) awards students with a globally recognised certificate that will assist them in finding international employment opportunities.



## Admission Process

- ✓ The candidate needs to fill out the online application form with all the important details, such as phone number and email ID.
- ✓ After the successful submission of the application form, the candidate will receive a phone call from the EBU admission executive and will receive an email containing the program details.
- ✓ Once enrollment is confirmed, an email will be sent with the details of the program fee and the payment process.
- ✓ After the University receives payment confirmation, the candidate will receive an online admission form. The form must be completed to obtain course access.



Ready to Transform Lives and Start Your  
Counselling Journey?



*Enrol in the Diploma in Counselling  
Psychology at East Bridge University today!*



[contact@ebu.ac](mailto:contact@ebu.ac)



+33 1 85 14 96 41



[www.ebu.ac](http://www.ebu.ac)

**Apply Today!**